



#edd22

edd European
Development
Days
21-22 June 22 

How can mitigation policy reduce potential risk from roads to biodiversity and climate targets: case of Mozambique, Africa

BIOFUND - Denise Nicolau

21st June 2022

International
Partnerships

COMBO+ team from Mozambique

- Representing BIOFUND – Foundation for Conservation of Biodiversity, private foundation that supports 70% protected areas in Mozambique
- Part of COMBO+ Program team in Mozambique – support our Government reconciling economic development with biodiversity conservation through the adequate implementation of the mitigation hierarchy: policy and legislation, technical guidelines, private sector involvement, and training
- Partnership established in 2016 supported by AFD/FFEM, World Bank and UNDP



Global Biodiversity Framework

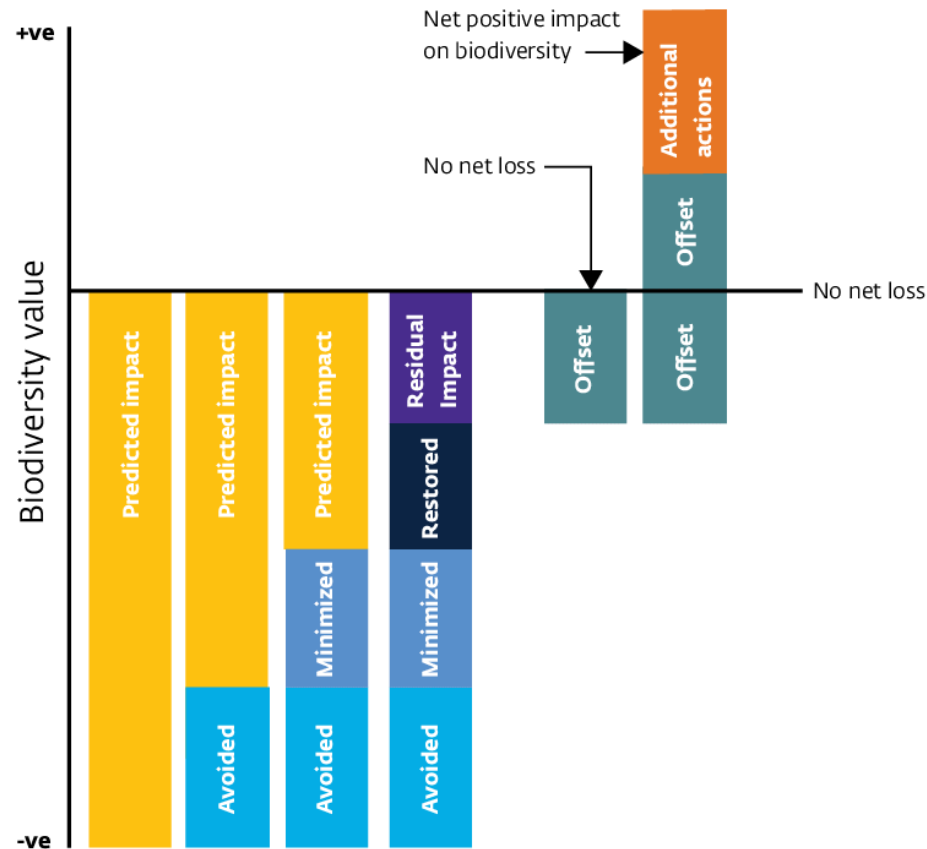
- UN Convention on Biological Diversity (CBD)
- UN United Nations Framework Convention on Climate Change (UNFCCC)
- Post-2020 Global Biodiversity Framework focus on improving the state of biodiversity and reverse trends in biodiversity loss to achieve 2050 biodiversity vision of living in harmony with nature
- Sustainable Development Goals (SDG)
- International Finance Corporation's (IFC) Performance Standard 6



United Nations
Framework Convention on
Climate Change



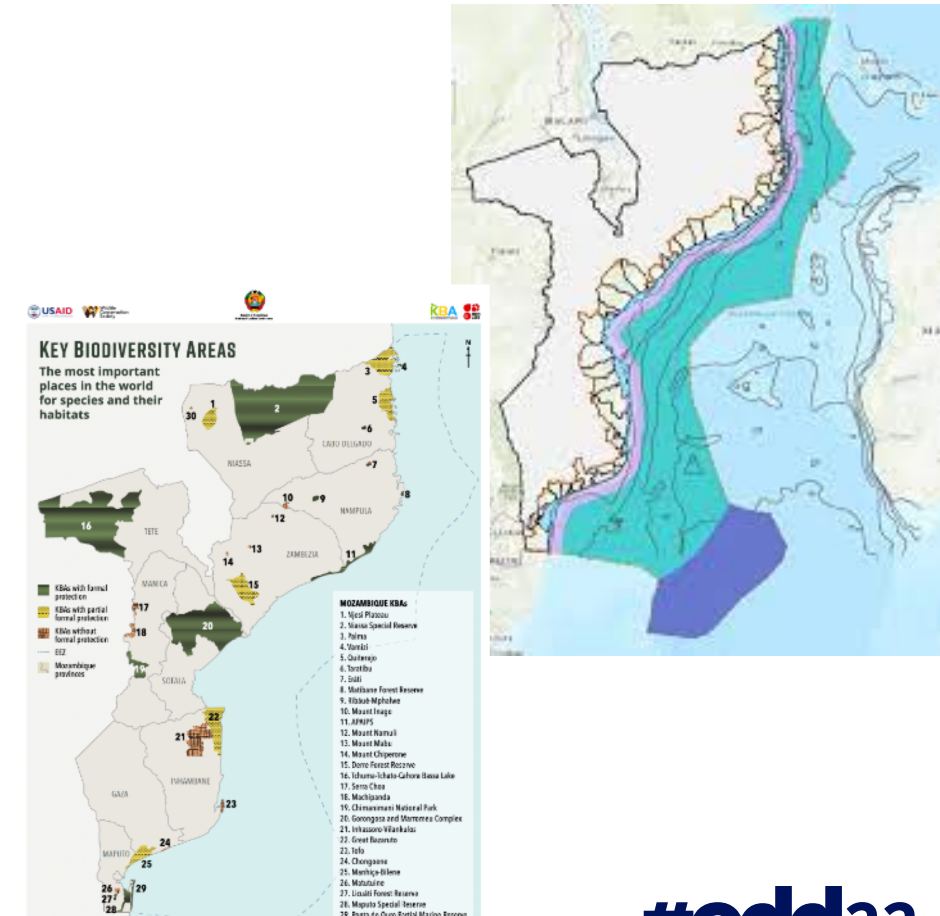
Mitigation Hierarchy (MH)



- The mitigation hierarchy is a set of guidelines, established through the International Finance Corporation's (IFC) Performance Standard 6, meant to help development projects prepare for impacts and aim to achieve no net loss of biodiversity.
- No Net Loss is a goal for a development project, in which the impacts on biodiversity are balanced by the MH measures.
- Mandatory for development projects and implemented worldwide via financial sector and country strategies

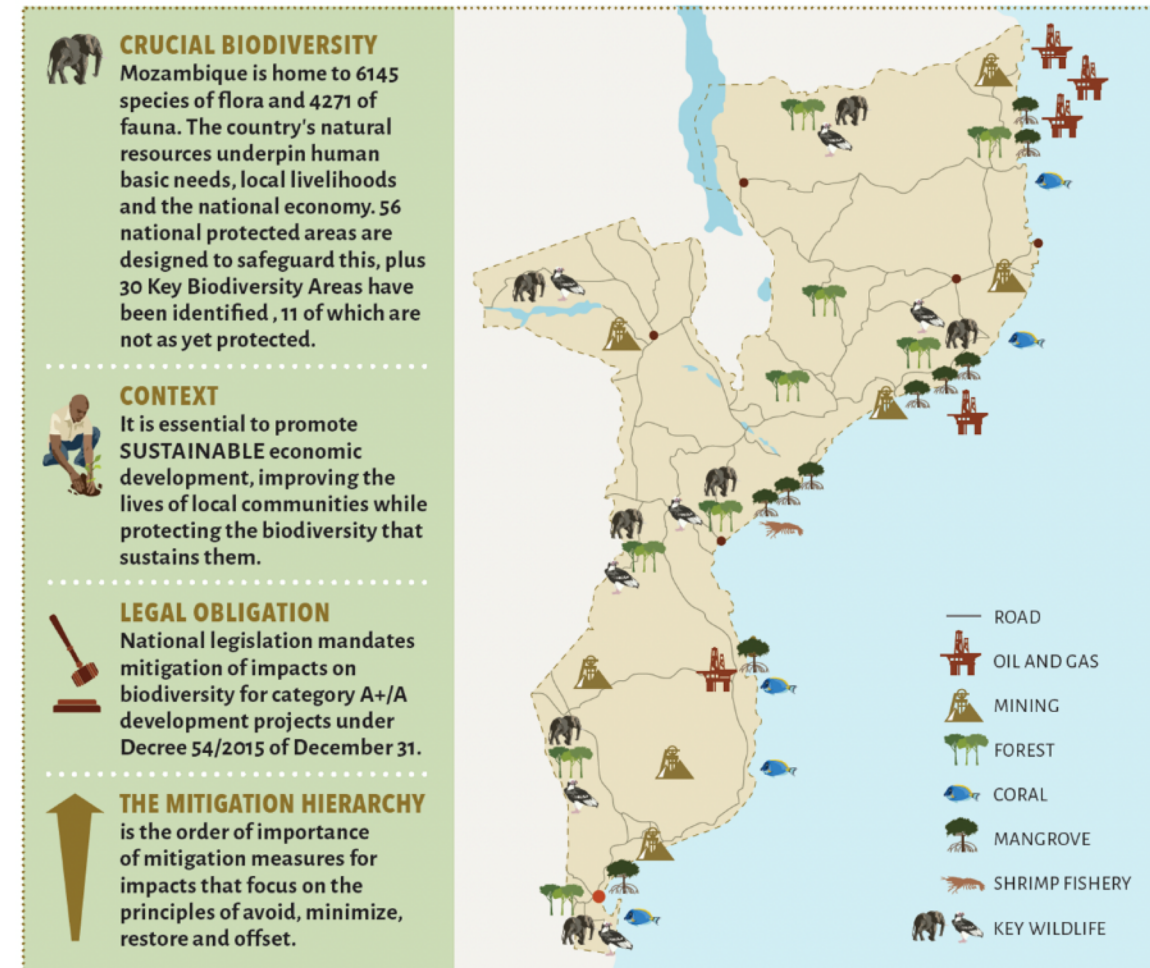
Mozambique: How do we address biodiversity conservation and economic development?

- National Biodiversity Strategy and Action Plan (2015 – 2035)
- National Territorial Maritime Plans MH
- Policy and Regulations for conservation and development sectors
- 26% Country under protection (National Conservation Areas Network)
- National Carbon accounting and deforestation mechanism
- Mapping of historical habitats
- Mapping of Key Biodiversity Areas (KBAs)
- Collaborative mechanisms (government, private sector, NGOs, academia, etc)



Mozambique: What is the Mitigation Hierarchy and how does it apply in Mozambique?

- MH is already included in the national legislation: **EIA Decree 54/2015**
- **COMBO+ Program** – support development of Biodiversity Offsets Regulation 55/2022
- **Need to achieve No Net Loss or Net Gain** (min. 15%) for specific biodiversity: KBAs, Critical Habitats, HCVs, threatened species or ecosystems
- Criteria established to select **which biodiversity can be impacted/** needs to be offset
- Government Bureau to deal with Biodiversity offsets





#edd22

edd European
Development
Days
21-22 June 22 

What's the experience in your country?
Share with us!

International
Partnerships

Merci
Thank you
Obrigada



©Maputo National Park, Denise Nicolau